



**PRECISION LIFT**  
INDUSTRIES, LLC



**RESIDENTIAL ELEVATORS - OUTDOOR ELEVATORS  
DUMBWAITERS - WHEELCHAIR LIFTS**

# ABOUT PLI

## OUR PRODUCTS ARE MADE IN THE USA!

Established in 2011, **Precision Lift Industries, LLC** is a manufacturer of residential elevators, residential and commercial vertical platform lifts, and residential and commercial dumbwaiters. Based in northwest Florida, our facility sits on 2.5 acres and consists of a 20,000 sq. ft. primary building with a separate paint shop and prep buildings.

We manufacture 95% of our elevator components in-house. Our products are designed, engineered, fabricated, and tested from the ground up at our facility. We do not “copy cat” or “piecemeal” our elevator packages together. Elevators are complex mechanical systems that should be engineered as such to ensure optimum performance, safety, and reliability.

Precision Lift Industries also offers factory-direct installation services in certain areas of the country. By utilizing factory direct installation services, you can be assured that your elevator will be properly and safely installed in a professional and timely manner. We have a network of qualified dealers that are properly trained for areas outside of our factory-direct installation area.





# TABLE OF CONTENTS

2	ABOUT PLI
3	TABLE OF CONTENTS
4-5	DURALYFT ELEVATOR
6-7	DURALYFT VPL
8-9	ASPIRE LOW RISE
10-11	ASPIRE COMMERCIAL
12-13	RESIDENTIAL DUMBWAITERS
14-15	COMMERCIAL DUMBWAITERS
16-17	RESIDENTIAL ELEVATORS
18-19	STANDARD ELEVATOR CAB FINISH OPTIONS



# DURALYFT ELEVATOR



The **DuraLift Elevator** is the perfect solution for homeowners who want to add an elevator to an existing house but don't want to take up valuable floor space inside or deal with the headache and expense of cutting through floors and concrete for a pit. The only modifications to your existing house are a simple concrete footer and a 120vac 20amp circuit!

The welded aluminum car and tower assembly ensure that your DuraLift Elevator will stand the test of time and weather! Optional powder coating adds a finishing touch to match most home exteriors. Optional picket-style gates and carriages are available to further match existing exteriors. The DuraLift Elevator comes standard with a top canopy and full height bi-fold door to ensure protection from the elements and guarantee passenger safety.

An automatic LED car light illuminates the dark nights so you never have to worry about turning the lights on or off! The fast 24 fpm travel speed makes our lift perfect for higher travel applications which are commonly found on beachfront homes!

500 lb or optional 750 lb capacities are available and all lifts have a 180 mph wind load rating to battle even the toughest weather and comply with strict jurisdictions.





# ODE-E500 AND ODE-E750

## DURALYFT ODE

<b>Model</b>	ODE-E500; ODE-E750
<b>Capacity</b>	500 lb or 750 lb
<b>Speed</b>	24 fpm
<b>Drive</b>	Winding drum or counterweight chain
<b>Safeties</b>	Type A instantaneous broken cable / broken chain
<b>Door Locks</b>	Electromechanical, Honeywell Reli-align
<b>Operation</b>	Constant pressure
<b>Finish</b>	Mill finish or powder coated white, tan, grey
<b>Control System</b>	PLC based controller with VFD drive
<b>Suspension</b>	Stainless steel cable or Dacromet coated chain
<b>Code</b>	ASME A17.1.5.3 (check with local AHJ) ASME A18.1
<b>Max Travel</b>	35'



Contact us today so we can explain the many options and features that are available on this one of kind Duralyft Elevator!

Call us at 1-877-770-5862

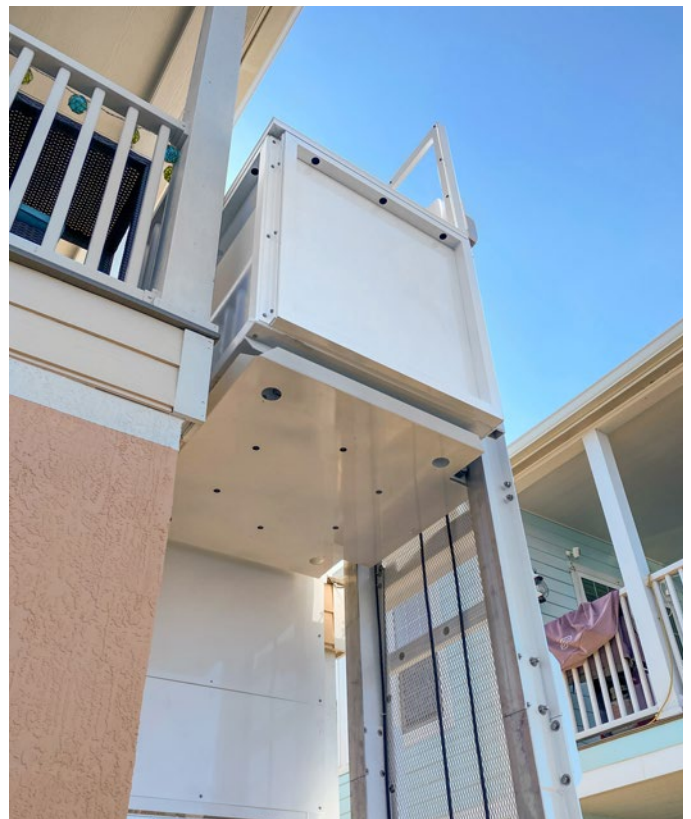
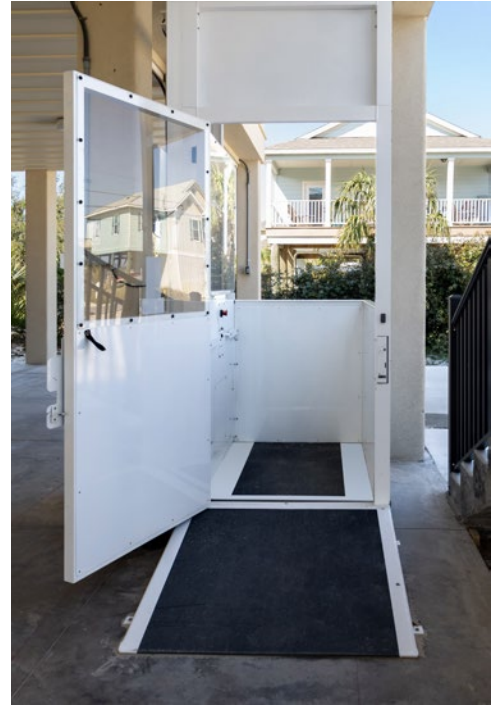
# DURALYFT VPL

The **DuraLyft VPL** (Vertical Platform Lift) is perfect for homeowners needing a simple solution to create easy access to a deck or porch.

Traveling at 24 fpm, our DuraLyft VPL is twice as fast as most of our competitors, which makes it ideal for the higher travel applications commonly found in piling and elevated homes that need up to 14' of travel.

Aluminum and stainless steel construction means our lift will withstand harsh weather environments! Add an optional top canopy and side walls to ensure passengers are protected from the weather as well!

The DuraLyft VPLs have a 180 mph wind load rating to battle even the toughest weather and comply with strict jurisdictions. The only modifications required to your existing home are a simple concrete footer and a 120vac 20amp circuit!



# ODE-V500 AND ODE-V750

## DURALYFT VPL

<b>Model</b>	ODE-V500; ODE-V750
<b>Capacity</b>	500 lb or 750 lb
<b>Speed</b>	24 fpm
<b>Drive</b>	Winding drum or counterweight chain
<b>Safeties</b>	Type A instantaneous broken cable / broken chain
<b>Door Locks</b>	Electromechanical, Honeywell Reli-align
<b>Operation</b>	Constant pressure
<b>Finish</b>	Mill finish or powder coated white, tan, grey
<b>Control System</b>	PLC based controller with VFD drive
<b>Suspension</b>	Stainless steel cable or Dacromet coated chain
<b>Code</b>	ASME A18.1
<b>Max Travel</b>	14'

Optional powder coating, picket style gates and picket style carriages are available to further aid in blending in with existing home exteriors.





# ASPIRE LOW RISE

The **Aspire VPL** is the perfect solution to overcome low travel barriers, such as porches, decks, patios and steps, up to 5' in travel height!

The simple installation only requires a concrete pad and 120vac circuit. It provides safe and easy access for wheelchairs, power scooters or any person who struggles with stairs.

No enclosure is needed on this model due to the constant pressure operation and safety under-pan to detect obstructions below!

The Aspire is manufactured from marine-grade aluminum and stainless to ensure long-lasting durability and reliability. The smooth motor controls quickly transport 750 lb up to 5' at a rate of 24 fpm!

Optional powder coating adds a finishing touch to match most home exteriors. Locking gates and automatic ramps are available to configure each lift to best suit the application.





# ODE-A750

## ASPIRE VPL

<b>Model</b>	ODE-A750
<b>Capacity</b>	750 lb
<b>Speed</b>	24 fpm nominal
<b>Drive</b>	Counterweight chain
<b>Safeties</b>	Instantaneous type "A" broken chain activation
<b>Door Locks</b>	Electromechanical
<b>Operation</b>	Constant pressure
<b>Finish</b>	Mill finish or white or grey powder coating
<b>Control System</b>	VFD motor control/relay logic
<b>Suspension</b>	#40 roller chain x 2
<b>Code</b>	ASME A18.1
<b>Max Travel</b>	5'



The Aspire VPL comes 90% pre-assembled to ensure a quick, reliable and hassle-free lift!

Contact us today so we can guide you in selecting the perfect lift for your application!

# ASPIRE COMMERCIAL

Looking for a robust and reliable commercial wheelchair lift? The **Aspire Commercial Custom VPL** is the perfect product for your commercial building or property!

Truly built to withstand the elements, the Aspire Commercial Custom VPL is manufactured from marine grade aluminum and stainless steel!

An optional hoistway enclosure can be added and is built with square aluminum tubing and plexiglass which completely contains the lift and complies with the national elevator code for wheelchair lifts / VPLs. Add a top to the enclosure to make sure passengers are protected from the weather!

Traveling at 24 fpm, the Aspire Commercial Custom quickly and safely transports 750lbs up to 14' of travel. Optional powder coating adds a finishing touch to match most building exteriors.



These enclosures are custom built to fit the needs of the property and when properly configured, can help comply with ADA requirements.





# ODE-AC750

## ASPIRE COMMERCIAL VPL

<b>Model</b>	ODE-AC750
<b>Capacity</b>	750 lb
<b>Speed</b>	24 fpm nominal
<b>Drive</b>	Counterweight chain
<b>Safeties</b>	Instantaneous type "A" broken chain activation
<b>Door Locks</b>	Electromechanical
<b>Operation</b>	Constant pressure
<b>Finish</b>	Mill finish or white or grey powder coating
<b>Control System</b>	VFD motor control/relay logic
<b>Suspension</b>	#40 roller chain x 2
<b>Code</b>	ASME A18.1
<b>Max Travel</b>	14'

Contact us today so we can help select the perfect lift for your application!

Call us at 1-877-770-5862



# RESIDENTIAL DUMBWAITER

The **Quick Serve-200** (QS-200) is a residential dumbwaiter designed to quickly and safely transport small cargo between multiple levels of a house.

Dumbwaiters are a great solution when space is limited or budget restrictions prohibit the installation of a complete elevator.

Our dumbwaiters are easy to install and utilize “cat5” cables to easily connect the buttons and switches.

In certain jurisdictions, these units can be installed by a homeowner or general contractor who has above-average mechanical skills.

## Standard White Laminate Car

- ✓ Very durable and easy to clean
- ✓ Bi-parting doors keep cargo secure
- ✓ Quick and easy to assemble!
- ✓ Custom sizes are available in 1” increments.  
(with some limitations)
- ✓ Also available in Oak, Cherry, Mahogany, or Maple plywoods, either unfinished or pre-finished.

## To Determine the Size of Your Dumbwaiter:

Reference the size chart and configurations on page 14

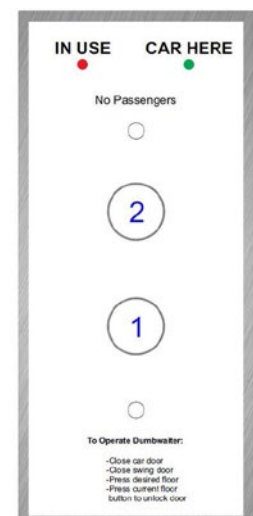
- ✓ Are you building a shaft to fit the dumbwaiter?
- ✓ Or, does the dumbwaiter need to fit an existing shaft?

Next, use the chart in this document to determine shaft width and depth based on desired cab size or vice versa.

We specialize in custom dumbwaiter cab sizes and most likely have already built one for another customer!

Custom sizes are available to the nearest inch. Some restrictions apply due to code restrictions and mechanical limitations.

No extra charge for custom sizes.





## TOP MOTOR MOUNT BEST USES

**Flood-prone areas**

**Low loading heights on the ground floor**

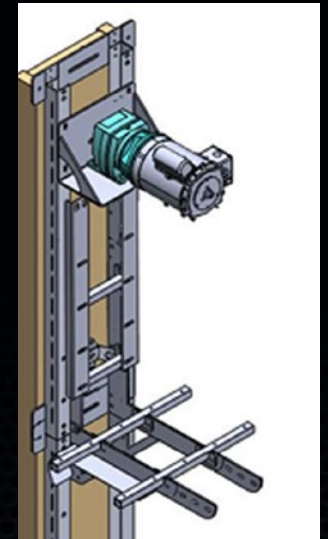
## BOTTOM MOTOR MOUNT BEST USES

**Overhead restrictions**

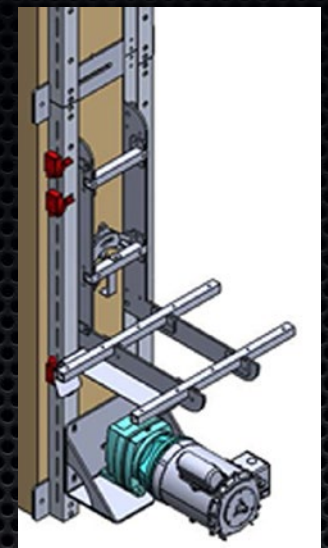
**Floor level loading desired at the top floor**

Capacity	200 lb (optional 300 lb)
Speed	32 fpm, nominal
Drive	Chain drive, continuous loop, no counterweights
Operation	Automatic operation, manual Doors
Control system	PLC Logic, 24 VDC locks, buttons, switches. 100% plug 'n' play
Door interlocks	Electromechanical, locks hall doors and prevents operation when door is open
Car gate	Bi-parting
Hall doors	Swing style, by Others
Car material and finish	Standard white laminate, optional hardwood veneer or marine grade plastic
Car frame	Aluminum with roller guides and broken cable safeties
Guide rail	Aluminum channel
Standard car size	20"w x 20"d x 30"h
Custom min-max car sizes	Minimum 16"w x 16"d x 30"h
Maximum w/ side rail mount	24"w x 30"d x 30"h
Maximum w/ rear rail mount	30"w x 24d x 36"h
Oversized car option	>24"w, >30"d, up to 36"h = totals up to 21 cubic feet
Travel distance	Up to four landings, max travel 51' required
Machine Mount Location	Top or bottom, access hatch (by Others) required
Electrical requirements	120 VAC, 15 amp circuit
Safety	ETL Listed
Warranty	2 years

Top motor mount



Bottom motor mount



# COMMERCIAL DUMBWAITER

The **QSC-300** is perfect for commercial projects that require a durable and reliable dumbwaiter to transport goods. Available in stainless steel, these units are designed for the rigors of commercial service.

When paired with a set of Kafka stainless dumbwaiter doors, this is an excellent addition to your restaurant, office building, retail space, and more.

## STAINLESS STEEL CARS

304-grade stainless steel, #4 brush finish

Ultimate in durability!

Standard and custom sizes are available!



This unit is not intended to transport human beings or live cargo.

The QS-200 & QSC-300 have a 2-year warranty on all parts and components. See warranty document for further details.

Please email [dumbwaiters@PrecisionLiftIndustries.com](mailto:dumbwaiters@PrecisionLiftIndustries.com) for information specific to your area.

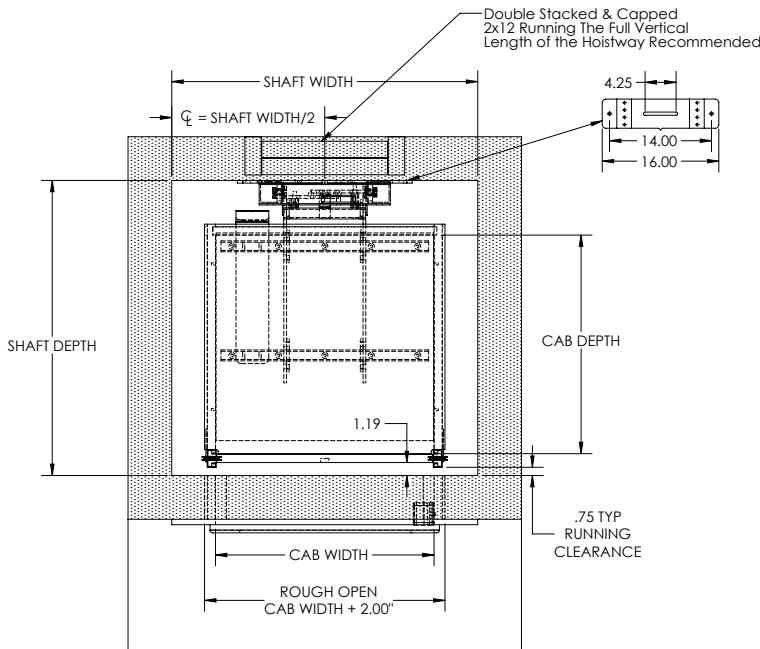
Modern membrane-style call buttons (similar to those found on microwaves, refrigerators, and ovens) create a simple, clean look that complements most interiors.

Our call/send buttons are easily wiped clean to eliminate the worry of germs or grime on the surface.





ALL DIMENSIONS ARE CLEAR INSIDE TO FINISHED DRYWALL



### REAR RAIL CONFIGURATION CHART

CAB WIDTH	MIN SHAFT WIDTH	CAB DEPTH	CRITICAL SHAFT DEPTH
14"	24"	14"	21"-22"
15"	24"	15"	22"-23"
16"	24"	16"	23"-24"
17"	25"	17"	24"-25"
18"	26"	18"	25"-26"
19"	27"	19"	26"-27"
*20"	28"	*20"	27"-28"
21"	29"	21"	28"-29"
22"	30"	22"	29"-30"
23"	31"	23"	30"-31"
*24"	32"	*24"	31"-32"

SIZES OVER 24" REQUIRE 300LB OVERSIZED UPCHARGE

25"	33"	25"	32"-33"
26"	34"	26"	33"-34"
27"	35"	27"	34"-35"
28"	36"	28"	35"-36"
29"	37"	29"	36"-37"
*30"	38"	*30"	37"-38"

CAB HEIGHTS AVAILABLE IN 30.00" & 36.00"

\*STANDARD SIZES

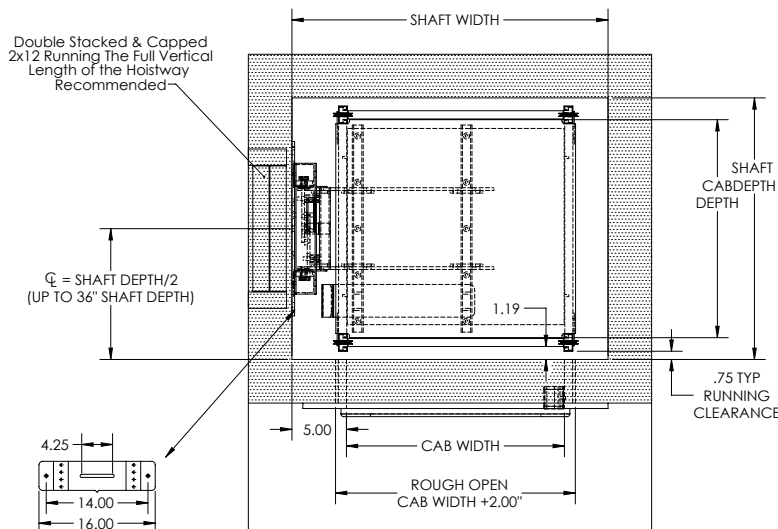
STRONGLY RECOMMEND LEAVING FRONT OF HOISTWAY OPEN AT BOTTOM FLOOR FOR INSTALLATION.  
ACCESS HATCH RECOMMENDED AT MOTOR LOCATION / MOTOR LOCATION RECOMMENDED AT BOTTOM (TOP OPTIONAL).  
SHAFT CONSTRUCTION TO MEET ALL LOCAL JURISDICTION REQUIREMENTS.



MODEL	QS-200 DUMBWAITER
CAPACITY	200 LBS STANDARD / 300LBS OVERSIZE PACKAGE OPTIONAL
SPEED	32 FPM (Nominal)
DRIVE	CHAIN DRIVE GEAR MOTOR
OPERATION	AUTOMATIC OPERATION, MANUAL DOORS
ELECTRICAL REQUIREMENTS	REQUIRES A DEDICATED CIRCUIT, 120VAC, 15AMP OUTLET WITHIN SIGHT OF THE MOTOR.
CODE	AMSE 17.1.7

NAME	DATE	PROJECT NAME
KSB	2-11-19	
PROJECT LOCATION		
COMMENTS		
Generic		
SCALE 1/8" = 1'-0"		
SHEET 1 OF 4		

ALL DIMENSIONS ARE CLEAR INSIDE TO FINISHED DRYWALL



### SIDE RAIL CONFIGURATION CHART

CAB WIDTH	SHAFT WIDTH	CAB DEPTH	MINIMUM FRONT ONLY SHAFT DEPTH	CRITICAL PASS THRU SHAFT DEPTH
14"	24"	-	-	-
15"	24"	-	-	-
16"	24"	-	-	-
17"	25"	17"	22"	21"
18"	26"	18"	23"	22"
19"	27"	19"	24"	23"
*20"	28"	*20"	25"	24"
21"	29"	21"	26"	25"
22"	30"	22"	27"	26"
23"	31"	23"	28"	27"
*24"	32"	*24"	29"	28"

SIZES OVER 24" REQUIRE 300LB OVERSIZED UPCHARGE

25"	33"	25"	30"	29"
26"	34"	26"	31"	30"
27"	35"	27"	32"	31"
28"	36"	28"	33"	32"
29"	37"	29"	34"	33"
*30"	38"	*30"	35"	34"

CAB HEIGHTS AVAILABLE IN 30.00" & 36.00"

\*STANDARD SIZES

STRONGLY RECOMMEND LEAVING FRONT OF HOISTWAY OPEN AT BOTTOM FLOOR FOR INSTALLATION.  
ACCESS HATCH RECOMMENDED AT MOTOR LOCATION / MOTOR LOCATION RECOMMENDED AT BOTTOM (TOP OPTIONAL).  
SHAFT CONSTRUCTION TO MEET ALL LOCAL JURISDICTION REQUIREMENTS.



MODEL	QS-200 DUMBWAITER
CAPACITY	200 LBS STANDARD / 300LBS OVERSIZE PACKAGE OPTIONAL
SPEED	32 FPM (Nominal)
DRIVE	CHAIN DRIVE GEAR MOTOR
OPERATION	AUTOMATIC OPERATION, MANUAL DOORS
ELECTRICAL REQUIREMENTS	REQUIRES A DEDICATED CIRCUIT, 120VAC, 15AMP OUTLET WITHIN SIGHT OF THE MOTOR.
CODE	AMSE 17.1.7

NAME	DATE	PROJECT NAME
KSB	2-11-19	
PROJECT LOCATION		
COMMENTS		
Generic		
SCALE 1/8" = 1'-0"		
SHEET 2 OF 4		

# RESIDENTIAL ELEVATORS

The **WD-9500 / HD-9500** series elevators are perfect for clients looking for an indoor residential elevator that integrates seamlessly inside a home!

Automatic operation quickly transports 950 lb up to 50' in travel, at a rate of 40 fpm! Swing doors with safety interlocks are used to protect each floor level and blend with the other doors inside the home.

A wide range of cab sizes and finishes are available to match any décor. Builders and homeowners alike appreciate the machine-room-less design of the WD-9500 series. It integrates the motor assembly at the top of the elevator shaft, leaving only a small control panel to mount outside of the shaft. The design of the WD-9500 has the added benefit of being very durable in flood prone areas since all driving machines and controls are installed up high, out of harm's way. A float switch can be added for additional flood zone protection.

For clients who prefer a hydraulic drive system, the HD-9500 is the perfect solution! A small machine room is required to house the hydraulic pump which smoothly raises and lowers the elevator cab with a large hydraulic cylinder and electronic control valve.

WD9500 / HD9500 series Residential Elevators are built to the latest National Code Standards, certified by ETL/Intertek, and have robust safety monitoring circuits built into the controller to ensure the utmost safety. Our controllers comply with jurisdictions such as Florida, California, and Michigan requiring individual door circuit monitoring as well as other strict code requirements.

## WOOD CAB FINISH OPTIONS

- ✓ Unfinished/raw wood veneer (standard)
- ✓ Prefinished with a standard stain selection from below
- ✓ Prefinished with no stain, clear coat only
- ✓ Prefinished with a custom MINWAX Wood Finish stain



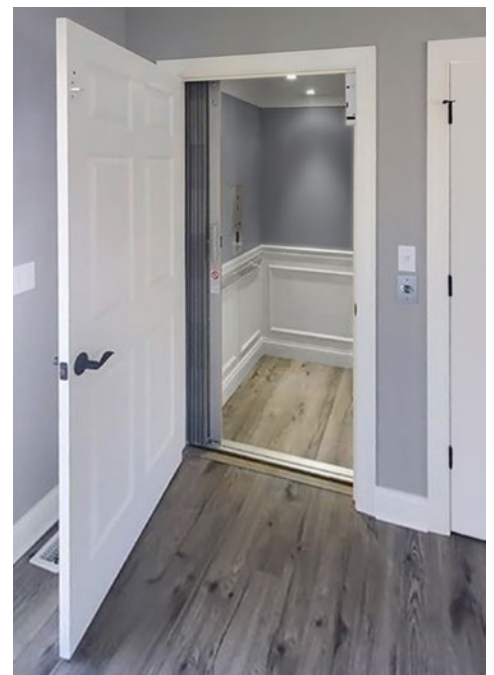
NATURAL 209



CLASSIC GREY 271\*



SEDONA RED 222





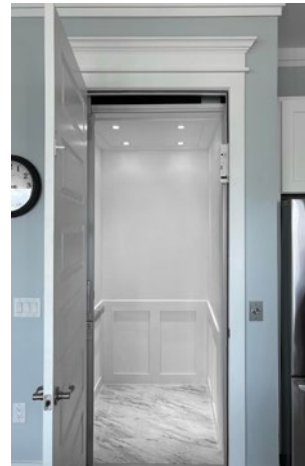
# 9500 SERIES

## INDOOR RESIDENTIAL ELEVATORS

<b>Model</b>	WD-9500, HD-9500
<b>Capacity</b>	950 lb
<b>Speed</b>	40 fpm
<b>Drive</b>	Winding drum or roped hydraulic
<b>Safeties</b>	Instantaneous type "A" broken cable
<b>Door Locks</b>	Electromechanical Honeywell Reli-align
<b>Operation</b>	Automatic operation
<b>Optional</b>	Battery lowering, auto gate Operator and auto 2nd floor homing
<b>Control System</b>	PLC with VFD motor control
<b>Suspension</b>	3/8" wire rope
<b>Code</b>	ASME A17.1.5
<b>Max Travel</b>	50'



Flat wall - standard



Shaker style



Traditional style



Scan for Custom color options available at [MINWAX.com](http://MINWAX.com)

# STANDARD ELEVATOR CAB FINISH OPTIONS



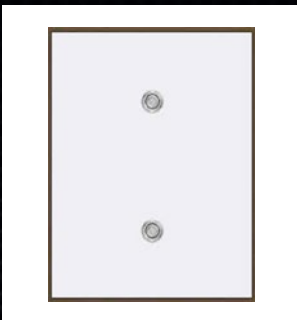
## DRIVE SYSTEM

- ✓ Overhead Winding Drum (Standard)
- ✓ Roped Hydraulic

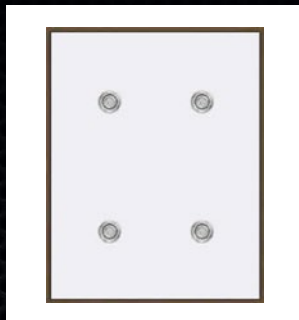
## LANDINGS

- ✓ 2 (Standard)
- ✓ 3
- ✓ 4
- ✓ 5

## LIGHTING OPTIONS



Two pattern  
LED Downlight



Four pattern  
LED Downlight

## HANDRAIL OPTIONS



Flat handrail  
(Standard)



Round handrail

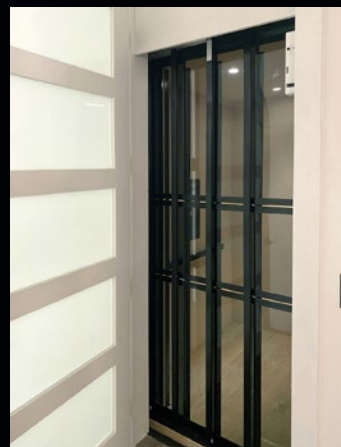
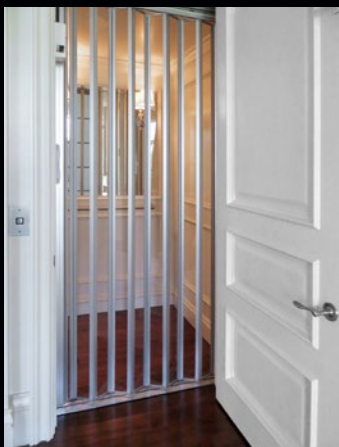
## FIXTURE FINISH Applies to COP, hall fixtures, and handrail



- ✓ Brushed aluminum (standard)
- ✓ Bronze powder coat
- ✓ Copper vein powder coat



## GATE PANEL OPTIONS Clear or tinted acrylic panels



Accordion Gates

Sliding Panel Gates

## ACCORDION GATES

### Vinyl Laminate Panels



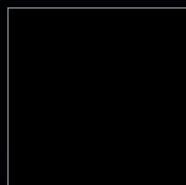
White Vinyl



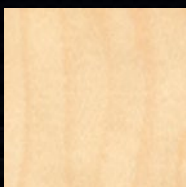
Grey Vinyl



Tan Vinyl



Black Vinyl



Maple Vinyl



Natural Oak Vinyl

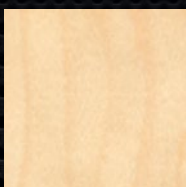


Cherry Vinyl



Mahogany Vinyl

### Natural Hardwood Veneer Panels



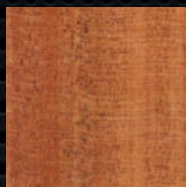
Maple



Oak



Cherry



Mahogany



## GATE FRAME OPTIONS

- ✓ Anodized Clear
- ✓ White
- ✓ Anodized Bronze
- ✓ Black





**PRECISION LIFT**  
INDUSTRIES, LLC

3605 N. Davis Hwy, Pensacola, FL 32503

1-877-770-5862

[Sales@PrecisionLiftIndustries.com](mailto:Sales@PrecisionLiftIndustries.com)



**[PrecisionLiftIndustries.com](http://PrecisionLiftIndustries.com)**

Follow Us on Social Media

